



Disco-Antistat Ultrasonic
Vinyl record cleaning machine

KNOSTI Phono-Zubehör-Vertriebs GmbH

Gewerbering 4, D - 86666 Burgheim

Tel.: +49 8432 94870

Fax: +49 8432 948730

info@knosti.de — www.knosti.de — www.cleaning-records.com



KNOSTI Phono-Zubehör-Vertriebs GmbH

Gewerbering 4, D - 86666 Burgheim

1.	Important basic information.....	4
1.1	Scope of delivery.....	4
1.2	General description of the product.....	4
1.3	Setting up the device and limits of use	5
1.3.1	Work surface, set-up area and size	5
1.3.2	Recommended maximum time usage.....	5
1.3.3	Environmental parameters – rooms.....	5
1.4	Responsibilities... ..	5
1.4.1	Manufacturer’s responsibilities (Knosti).....	5
1.4.2	User’s responsibilities (customer)	5
1.5	Legal notices.....	5
2.	Safety.....	6
2.1	Description of the safety instruction.....	6
2.2	Important information on operational safety	6
3.	Intended use and safety.. ..	6
3.1	Connection to the mains and use	6
3.2	Safety equipment for safe use.....	6
3.3	Handling liquid and electric current.....	7
3.4	Tipping the device	7
3.5	What to do if the container overflows or in case of spillage.....	7
3.6	Operators and users	7
3.7	Environment	7
3.8	Area of use.....	7
3.9	Area of application....	7
3.10	Protection devices.....	8
4.	Possible misuse (reasonably foreseeable misuse.....	8
4.1	Explanation	8
4.2	Possible errors that can lead to safety risks	8
4.3	Residual hazards and protective measures	8
5.	Technical data.....	8
5.1	Connection data	8
5.2	Other technical data.....	8
6.	Operation	9
6.1	Safety.....	9
6.2	Overall view	9
6.3	Controls, control panel.....	9
6.4	Start-up.....	10
6.4.1	Reading through user manual.....	10
6.4.2	Preparing cleaning fluid	10
6.4.3	Important instructions for use and hazard warnings for cleaning fluid	10

6.4.4	Filling the device with cleaning fluid	11
6.4.5	Preparing the record.....	12
6.4.6	Inserting the record	12
6.4.7	Programming and cleaning	13
6.4.8	Removing and drying	13
7.	Maintenance and repair.....	14
7.1	Safety	14
7.2	Pumping the cleaning fluid out, replacing the cleaning fluid	14
7.2.1	Opening the service flap.....	14
7.2.2	Preparing for pumping out.....	14
7.2.3	Pumping out the cleaning fluid to drain the device.....	15
7.2.4	Draining the device without pump / without electricity	16
7.3	Cleaning the tray.....	16
7.4	Removing / installing the cleaning brushes	17
7.4.1	Removing the cleaning brushes.....	17
7.4.2	Installing the cleaning brushes.....	17
7.5	Filter change.....	18
8.	Troubleshooting	19
8.1	Safety	19
8.2	Service address	19
8.3	Initial measures for rectifying faults	19
8.4	Modifications / changes	20
9.	Disposal.....	20
10.	Warranty.....	20
11.	Available accessories	20

1. Important basic information



Please read the user manual through carefully **BEFORE** switching on the device for the first time and always keep it handy for future reference! Keep the device's box and inner packaging in a safe place. Thank you.

1.1 Scope of delivery

- Device
- 200 ml cleaning concentrate Disco-Antistat Ultraclean
- 1 litre Disco-Antistat BiDest
- 1 microfibre cloth
- Label cover
- Power adapter 230VAC / 12VDC 3A with CE conformity
- Drying Rack
- Sponge brush 50mm
- Mixing bottle
- User manual
- Single adapter

1.2 General description of the product

The KNOSTI **Disco-Antistat Ultrasonic** record washing machine is designed for cleaning vinyl records. Using a suitable liquid cleaning agent for records **Disco-Antistat Ultraclean (item no. 1302000)**, we recommend the use of **Disco-Antistat BiDest (item no. 1302001)** for mixing the cleaning fluid or **Disco-Antistat Mixture (item no. 1301000)**. The record is cleaned automatically after switching the device on and setting the cleaning duration. The record rotates anticlockwise in the cleaning tray of the cleaning device, continually driven by a gear motor. In the process, the record is moved past an ultrasonic oscillator, which gently and effectively removes adhesive dirt particles down to the depth of the groove. The dirt particles are then wiped off on the tried and tested cleaning brushes made of goat's hair. The length of cleaning depends on how dirty the record is, with a cleaning duration of one to two minutes usually being sufficient. In the case of very dirty records, the cleaning process can be repeated if necessary or extended to a maximum of 5 minutes.



1.3 Setting up the device and limits of use

1.3.1 *Work surface, set-up area and size*

- Required set-up area on a table: approx. 40cm x 40cm
- Space for movement at the working areas: at least 30cm in front and behind

1.3.2 *Recommended time usage*

Maximum operating period: a 0.5 hr pause should follow after approx. 2 hrs of operation



The energy produced by the ultrasonic oscillator cannot be entirely absorbed by the liquid and circuit board or dissipated by the cooling elements. As a result, the device, as well as the cleaning fluid, can heat up during a prolonged period of operation and overheat if the recommended maximum operating period is not observed.

1.3.3 Environmental parameters – rooms

- Temperature range (without operation) (°C): 0°C to 50°C
- Temperature range (in operation) (°C): 15°C to 35°C
- Relative humidity (%): between approx. 30% and 90% max.
- Only use in indoor (heated) spaces
- No splash protection

1.4 Responsibilities

1.4.1 *Manufacturer's responsibilities (KNOSTI Phono-Zubehör-Vertriebs GmbH)*

- CE conformity testing and certification according to EU law (for home use)
- Support with start-up and application questions
- Service and support in the event of a warranty claim

1.4.2 *User's responsibilities (customer)*

- Compliance with safety regulations
- Correct use of electrical appliances in the home
- Maintenance and cleanliness of the device
- Environmentally-friendly disposal of the device at the end of its lifespan
- Restrict access for children

1.5 Legal notices

This device is intended exclusively for private use and **NOT** for commercial use.



This document only contains additional information on operational safety. It does **NOT** release the user or owner from strict compliance with the general safety and operating rules for electrical appliances in the home and in private.

For operation, only the cleaning fluids **Disco-Antistat Ultraclean (item no. 1302000)**, we recommend the use of **Disco-Antistat BiDest (item no. 1302001)** for mixing the cleaning fluid) or **Disco-Antistat Mixture (item no. 1301000)** recommended by KNOSTI may be used. Other fluids, solvents, aggressive liquids and household cleaners, other objects of any type, powder, sand, granules or similar are **NOT PERMITTED**.

Non-compliance will automatically void the warranty!

2. Safety

2.1 Description of safety instructions



Danger: Indicates a hazard with a **high** risk.
Non-compliance entails the risk of serious injuries including death of the operator and/or other people.



Caution: Indicates a hazard with a **moderate** risk.
Non-compliance entails the risk of serious injuries for the user and/or significant damage to the device.



Warning: Indicates a hazard with a **low** risk.
Non-compliance entails the risk of minor injuries for the user and damage to the device.



Note: Indicates a hazard with a **low** risk.
It is, however, strongly recommended to follow the instructions.

2.2 Important information on operational safety



In order to safely use the device, the safety instructions and requirements for intended use (Section 3) must **ALWAYS** be observed.

3. Intended use and safety

3.1 Connection to the mains and use



The device must **always** be **disconnected** from the mains for filling and cleaning. The device may only be connected to the 230V mains during cleaning. Only the 12V power adapter included in the scope of delivery may be used.

3.2 Safety equipment for safe use



The device may only be operated at a fused 230V socket connected in accordance with VDE guidelines.

3.3 Handling liquid and electric current

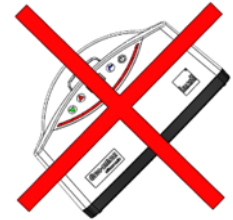


Handling liquids on an electrically operated device always poses a great risk to life and limb. Please make sure that the device is always disconnected from the mains when handling (e.g. when filling with cleaning fluid)!

3.4 Tipping the device



Pouring out the cleaning fluid by tipping the device (see figure) is expressly prohibited! There is a risk of fatal injury from electric shock if the device is connected to the mains.



3.5 What to do if the container overflows or in case of spillage



Handling water and cleaning fluid on an electrically operated device is always a great **risk**. If water or liquid gets into the device when pouring, the mains unit must not be plugged in under any circumstances. The water or liquid must first of all be **COMPLETELY** removed from the device (e.g. maintenance flap) and the device must be 100% dry before the device can be re-connected to the mains and used!

3.6 Operators and users



The device may only be operated by adults who have carefully read through the user manual. Children are strictly prohibited from playing with and handling the device.

3.7 Environment



Used material, such as dirty cleaning fluid, must be disposed of as indicated on the packaging. The cleaning container may only be filled with the cleaning fluids **Disco-Antistat Ultraclean (item no. 1302000)**, we recommend the use of **Disco-Antistat BiDest (item no. 1302001)** for mixing the cleaning fluid) or **Disco-Antistat Mixture (item no. 1301000)** recommended by KNOSTI. Other fluids, solvents, aggressive liquids and household cleaners, other objects of any type, powder, sand, granules or similar are **NOT PERMITTED** and impair/impede the function and result in damage to the device. See also Legal Notices on this in Section 1.5! Used cleaning fluid may only be disposed of in accordance with currently applicable environmental regulations.

3.8 Area of use



Use of the product is only permitted in indoor spaces (provided that environmental and connection requirements have been complied with).

3.9 Area of application



Private use in indoor (living) spaces.

3.10 Protection devices



The power adapter included in the scope of delivery is Protection Class 2. The power adapter is short-circuit-proof.

4. Possible misuse (reasonably foreseeable misuse)

4.1 Explanation

Legislation requires manufacturers of products to carry out risk assessments of reasonably foreseeable misuse caused by foreseeable unusual situations. For this purpose, **KNOSTI** Phono-Zubehör-Vertriebs GmbH has used the Guide to the Application of the Machinery Directive, § 172 Reasonably foreseeable misuse, as a template.

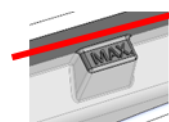


All of the errors described below can harm the operator. The device may be damaged and then no longer used.

4.2 Possible errors that can lead to safety risks



- Any handling of the device that is **NOT** performed as in **Section 3. Intended use and safety** is not permitted.
- Filling liquid under a tap, regardless of whether the device is connected to the mains or not!
- The use of different cleaning agents from those recommended by the manufacturer.
- Filling the device with cleaning fluid **OVER** the maximum fill level ("MAX.").
- Using the device and starting the cleaning programme **WITHOUT** having filled the tray with cleaning fluid.



4.3 Residual hazards and protective measures

In spite of all precautions and compliance with all specified safety measures, there may be accidents and damage to people and the device. Every user who interacts with the device described in this document must be aware that if they do not handle the electrical devices and equipment with care, there is a risk of electric shock.

5. Technical Data

5.1 Connection data

- 230V/50Hz via the 12V DC power adapter included in the scope of delivery
- The 12V DC power adapter included in the scope of delivery is short-circuit-proof
- Protection class 2
- NO IP protection class

5.2. Other technical data

- Fill quantity of cleaning fluid in the tray approx. 650 ml
- Empty weight approx. 1,500 g

6. Operation

6.1 Safety

Please read **Section 2** "Safety" and **Section 3** "Intended use and safety" before starting with the cleaning.

6.2 Overall view

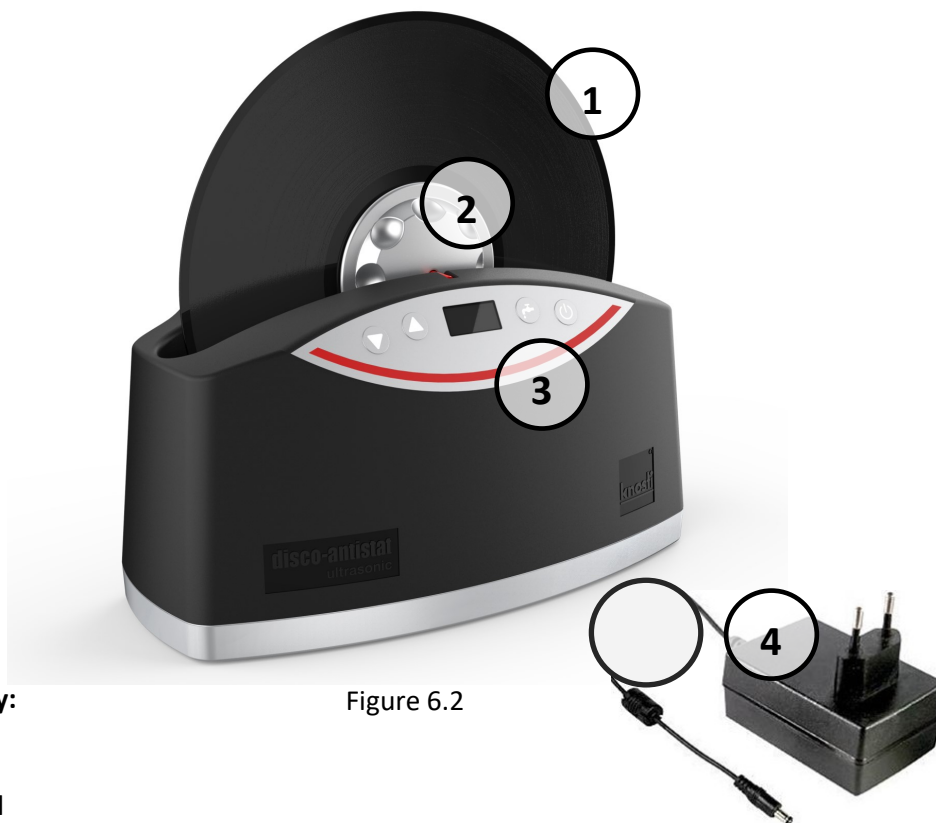


Figure 6.2

Overall view key:

1. Record
2. Label cover
3. Control panel
4. Power adapter

6.3. Controls (control panel)

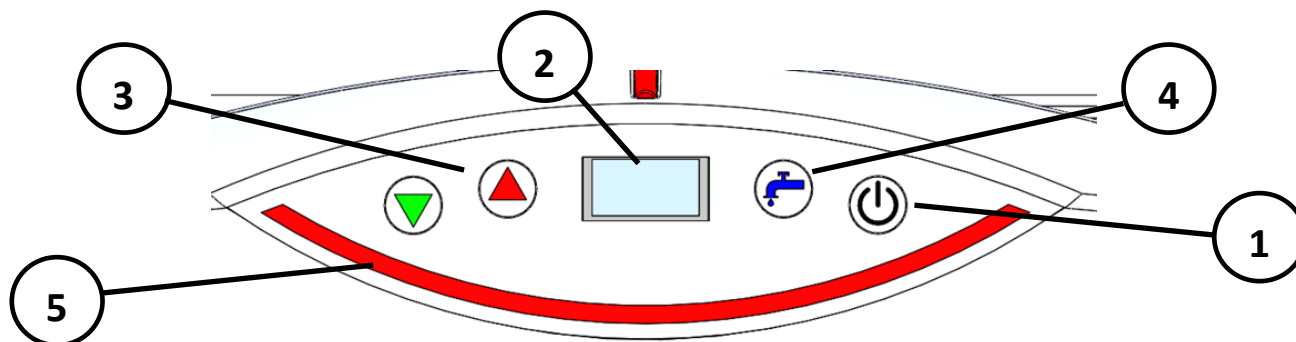


Figure 6.3

Control panel key:

1. On/off: press and hold for at least 5 seconds to switch the device on/off.
2. Display
3. Time pre-selection +/-: reduce/increase the cleaning duration by the pressing the button. A new cleaning operation can be started by briefly pressing the button.
4. Pump: start the pump out procedure by pressing the button for 5 seconds to drain the device.
5. Progress bar: LED display showing the relative time elapsed (1 LED = 10% of the set cleaning duration).

6.4 Start up

6.4.1 Reading the user manual



Please read the user manual through carefully **BEFORE** switching on the device for the first time! Thank you.

6.4.2 Preparing cleaning fluid

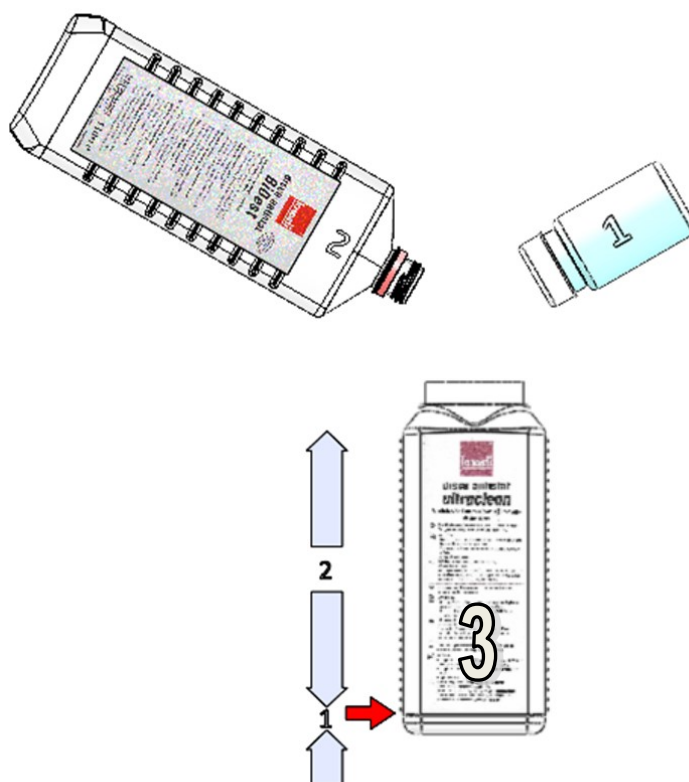


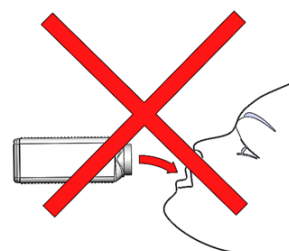
Figure 6.4.2-1

1. Pour in **Disco-Antistat Ultraclean** cleaning concentrate **(1)** up to the lower edge of the label of the mixing bottle **(3)** (see red arrow).
2. Fill the mixing bottle **(3)** with distilled water **(2)** up to the upper edge of the label and shake carefully (avoid formation of foam).

6.4.3 Important instructions for use and hazard warnings for cleaning fluid



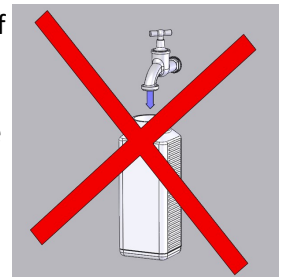
The cleaning concentrate **Disco-Antistat Ultraclean**, the water **Disco-Antistat BiDest** and the cleaning fluid mixed from them are **NOT** food and **NOT** designed for consumption! Please always keep both the cleaning concentrate and the ready-mixed cleaning fluid out of the reach of children!





Tap/drinking water is NOT suitable as a mixing agent for the preparation of the cleaning fluid with **Disco-Antistat Ultraclean!**

Substances dissolved in tap / drinking water, such as limescale, and other minerals can remain on the record after cleaning and negatively affect the cleaning result as well as the sound quality of the record.



6.4.4 Filling the device with cleaning fluid

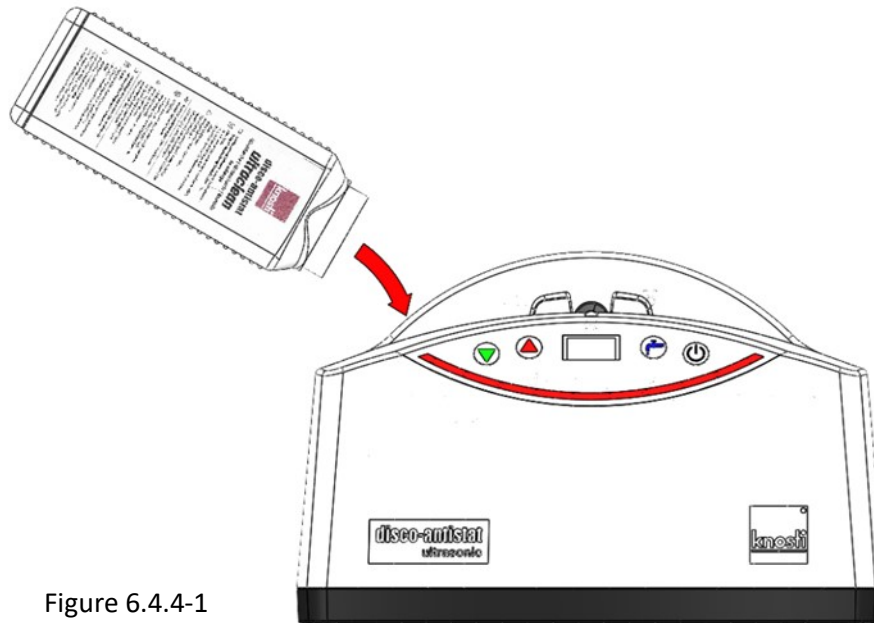


Figure 6.4.4-1



The cleaning container may **ONLY** be filled with the cleaning fluids **Disco-Antistat Ultraclean** (item no. 1302000), we recommend the use of **Disco-Antistat BiDest** (item no. 1302001) for mixing the cleaning fluid or **Disco-Antistat Mixture** (item no. 1301000) approved by KNOSTI. Other fluids, solvents, aggressive liquids and household cleaners, other objects of any type, powder, sand, granules etc. are **NOT PERMITTED!**

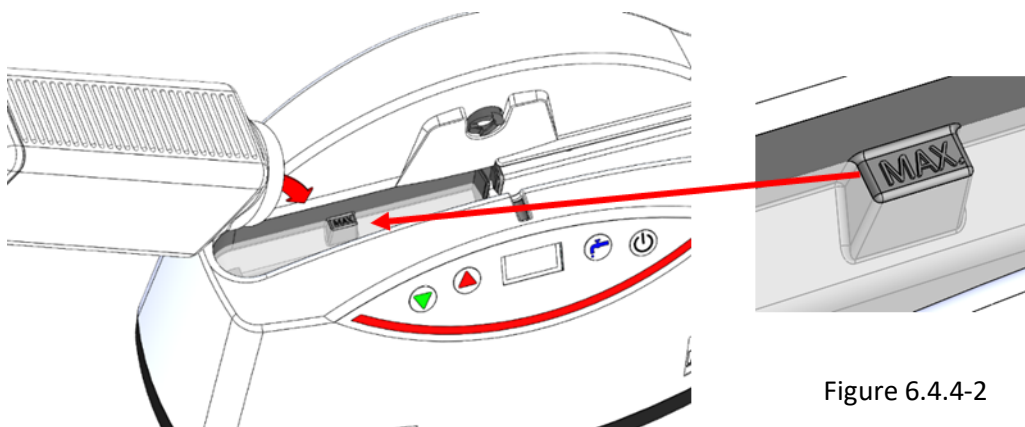


Figure 6.4.4-2



The fill level must be adjusted to the records to be cleaned as the fluid displacement of the individual records varies depending on diameter and pressing weight! Therefore, check the filling level with the record in place. If you have not yet reached the maximum filling level, carefully add some more cleaning fluid if necessary.

If the maximum fill level has been exceeded, follow the description in **3.5** and **7.2.3** of this manual!

6.4.5 *Preparing the record*

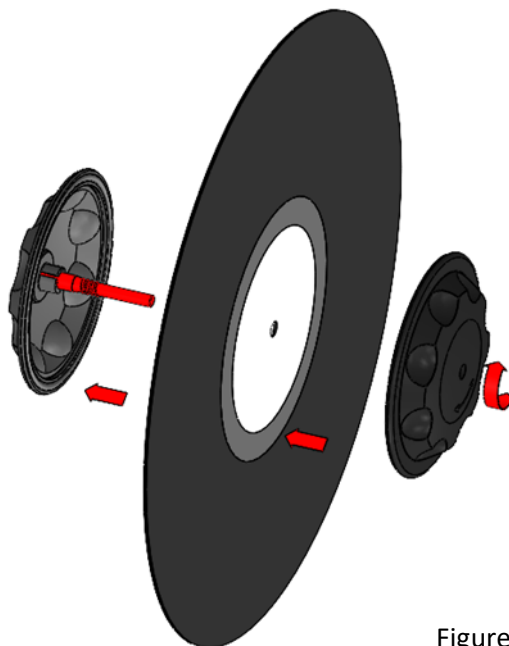


Figure 6.4.5



Close the label cover **without forcing it!** Screwing the label cover on too tightly may mean that the cover is very difficult to open after cleaning and can lead to damage to the label or label cover!

6.4.6 *Inserting the record*

Insert the record with the label cover fitted from above into the guide provided for this. (see 6.4.6-1). Then turn the record carefully until the toothed rim engages with the magnetic connection (see 6.4.6-2).

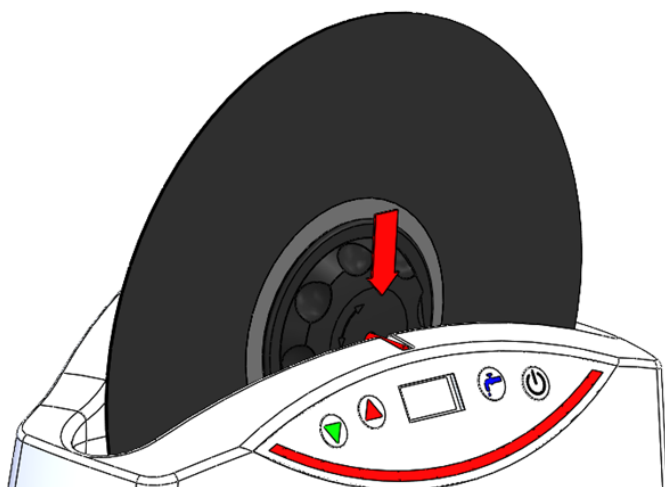


Figure 6.4.6-1

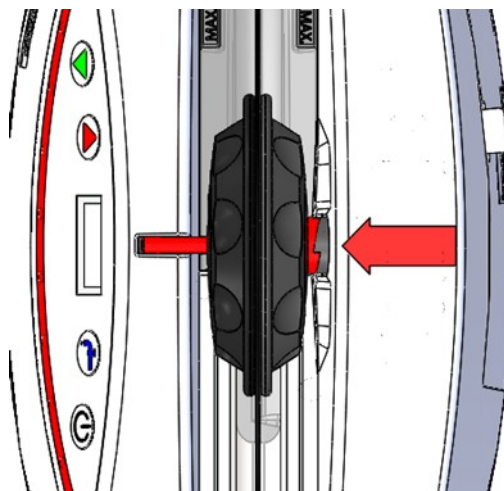


Figure 6.4.6-2

6.4.7 Default settings and cleaning mode

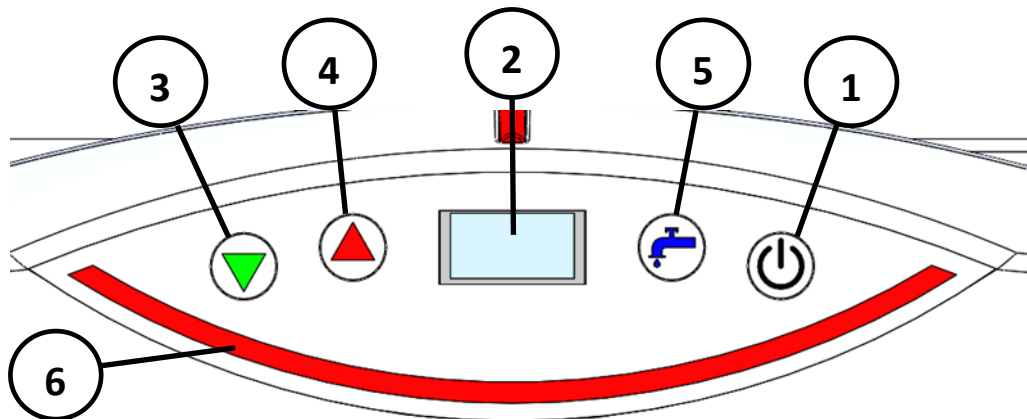


Figure 6.4.7

1. Press and hold the **button (1)** for at least 5 seconds to switch the device on. Once the Knosti logo and a greeting appear on the **display (2)**, the device is switched on.
2. The **time preselection buttons (3) and (4)** can be used to adjust the duration of the cleaning operation. A cleaning duration of **60 - 120 seconds** is usually sufficient for a **normal** cleaning operation.
3. The cleaning operation begins automatically after a few seconds. Once the set cleaning duration has elapsed, the device also ends the cleaning automatically.
4. The remaining cleaning duration is shown during operation on the **display (2)**, and the **progress bar (6)** shows the cleaning progress.
5. The progress bar (6) displays the cleaning status (1 LED = 10% of the set cleaning duration).
6. A new cleaning operation can be started by briefly pressing the **button (1)** or by setting a new cleaning duration via the **time preselection buttons (3) and (4)**.
7. The **button (5)** is used to start the process of pumping out the fluid. This function can only be started from the **STOP position**. This is indicated on the **display (2)** by the message "STOP" after the cleaning operation has finished. For this, see **Section 7. Maintenance and repair!**

6.4.8 Removing and drying

Once cleaning is complete, the record can be removed from the device. To do this, turn the record anti-clockwise slightly until the teeth (**see Figure magnetic closure 6.4.6-2**) loosen. The record can now be removed from the top of the device and placed in the drying rack (**6.4.8**) for drying once the label cover has been removed. Recommended drying duration approx. 15 minutes.

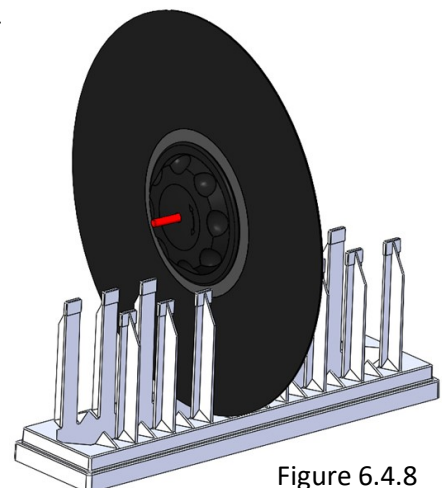


Figure 6.4.8

7. Maintenance and repair

7.1 Safety



BEFORE any maintenance or repair operation, carefully read **Section 2 (Safety)** and **Section 3 (Intended use and safety)** again and **ALWAYS** follow the instructions set out therein!

7.2 Pumping the cleaning fluid out, replacing the cleaning fluid

7.2.1 Opening the service flap

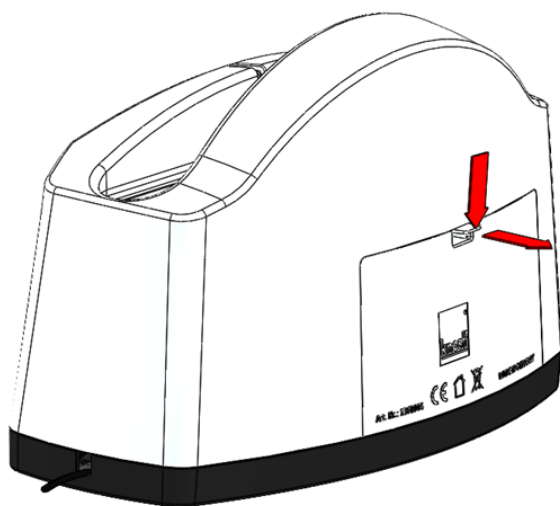


Figure 7.2.1-1

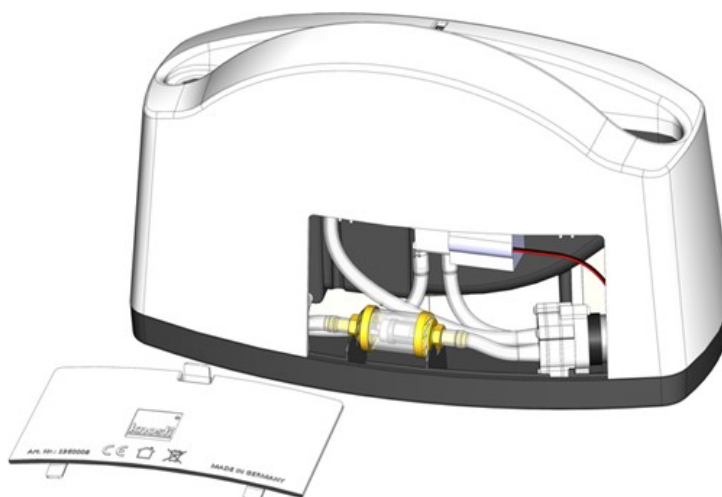


Figure 7.2.1-2

Open the service flap by pressing the lock and remove it to the rear (**Figure 7.2.1-1**). Then put the flap to one side (**Figure 7.2.1-2**).

7.2.2 Preparation for pumping out

Carefully pull out the hose from the solenoid valve and insert it into the opening of the empty mixing bottle. Ideally, place the empty mixing bottle underneath the lower edge of the device to ensure that the system can be fully drained.



Make sure that the bottle is stable and cannot tip or fall over!

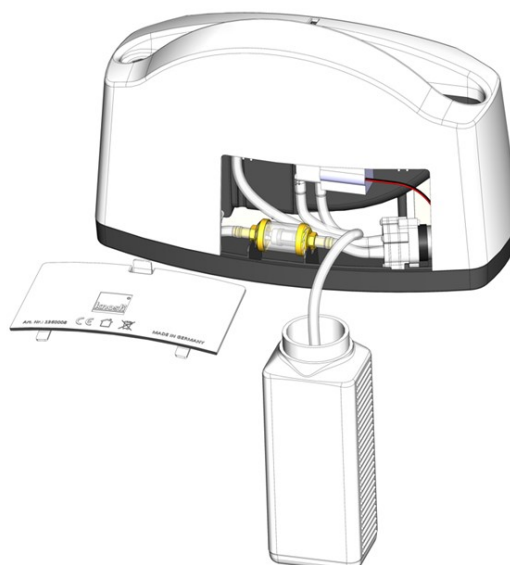


Figure 7.2.2

7.2.3 Pumping out the cleaning fluid to drain the device



Make sure that the hose end, as shown in **Figure 7.2.2 Preparing for pumping out**, is securely inserted in the empty mixing bottle and cannot slip out during the pumping out process.

1. The cleaning fluid starts to be pumped out when the **Pump** button is pressed. The pumping out operation is **ONLY** possible in the **STOP** position (see also **Section 3.4.7**)!

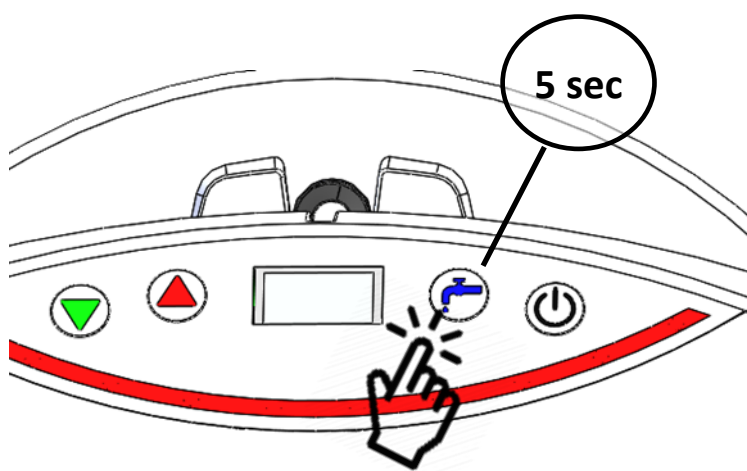


Figure 7.2.3-2

2. If the device is almost empty, the pump starts to "snorkel" as it also sucks in some air. This is completely normal and poses no risk for your device. After approx. 60 seconds, the pump automatically switches off and the cleaning tray is now empty.
3. Then store the hose back in the device and close the service flap correctly. It is important that there is **no fluid** left in the **hose**!
4. If required, remove liquid residues and possible dirt in the tray as described in **7.3**.



Make sure that the drain hose has been completely drained before storing it to avoid liquid residues present in the hose from getting inside the device.

7.2.4 Draining the tray without pump / without electricity

If, due to incorrect operation or a defect, it is necessary to drain the cleaning tray without connecting the device to the mains (e.g. due to overfilling, technical fault, moisture inside the device), **never pour the liquid out the tray by tipping it (see also 3.4 and 3.5)!**

1. Empty the trough e.g. with a pipette or with a highly absorbent sponge.
2. If necessary, then dry out the tray with the sponge brush provided. **(see 7.3 cleaning the tray)** and leave the device to fully dry out with the maintenance flap open



If liquid gets inside the device, never connect the device to the mains before the inside of the device has been fully dried! Also observe the instructions under **3.4** and **3.5** of this manual!

7.3 Cleaning the tray

In order to be able to clean the tray if required, the device comes with a sponge brush that can be used to remove dirt stuck to the tray. We recommend cleaning the tray straight after draining the device.

Likewise, residues of the cleaning fluid that remain on the bottom of the tray can be dried after draining the tray.

1. First, wipe out the bottom of the tray with the sponge brush.
2. Squeeze out the liquid absorbed by the sponge with your fingers and wash off any dirt particles on the sponge.
3. If necessary, repeat the process if there are still liquid residues on the bottom of the tray or if not all of the dirt could be removed.
4. If necessary, also wipe the inside of the tray with the sponge brush.
5. After cleaning is complete, wash off the sponge brush under running water. Let the sponge brush dry out fully before storing it.

7.4 Removing / installing the cleaning brushes

7.4.1 *Removing the cleaning brushes*

In order to clean the brushes or replace them if necessary, they can be removed from the housing.



Tools may be required to remove the brushes!

Required tools: e.g. flat nose pliers/needle nose pliers

1. Grip the brush with the pliers as close to the plastic guides as possible without touching these.
—> Make sure to grip as large an area of the brush hair as possible.
2. Now hold the brushes firmly by the hair and pull the brush upwards out of the housing.
3. Repeat the process on the other side.

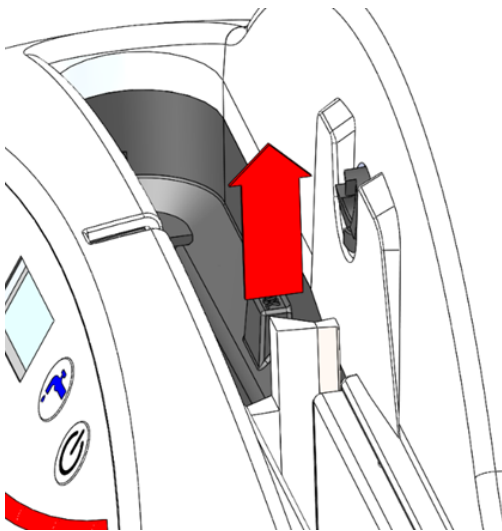


Figure 7.4.1

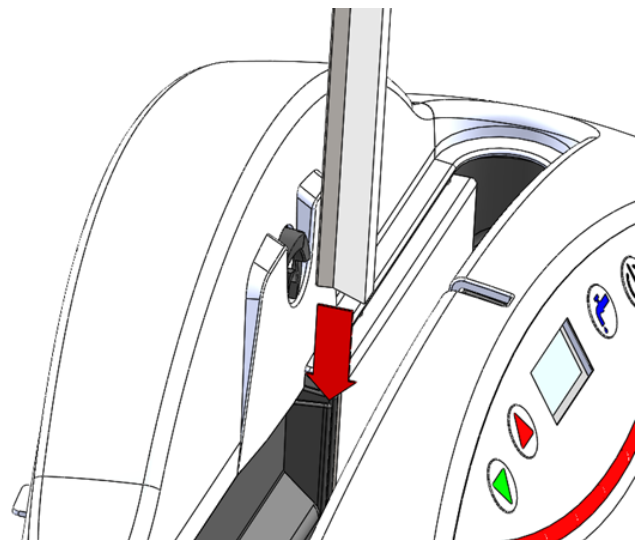


Figure 7.4.2

When wet, the goat's hair of the brushes swells, causing the brushes to sit more firmly in the guides. We therefore recommend removing or installing the brushes when they are dry.

7.4.2 *Installing the cleaning brushes*



Tools are generally not required to install the brushes.

Slide the cleaning brushes from above fully into the guides provided.



Make sure that the brushes are fully embedded in the guides and do not protrude beyond them. Protruding brushes may cause damage when inserting or removing the records!

7.5 Maintenance Filter aluminium/glass



No tools are usually required for the maintenance of the filter.

It is necessary to check the built-in filter for its degree of soiling and to clean it at regular intervals. The filter is available from the **KNOSTI** spare parts service.

- Open the service flap as described under **7.2.1**.
- Carefully remove the two hose ends at the inlet and outlet of the filter. The filter can now be re-moved from the housing.
- **Disassembling the filter & reassembling the filter:** To do this, hold the filter by the two gold-coloured ends and unscrew the filter counterclockwise.
- **Cleaning the filter;** wash the filter under running water and then dry the individual parts carefully

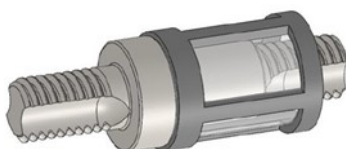


Always make sure that the filter is correctly fitted and the hose ends are firmly seated on the connection pieces of the filter. Then check the filter for leaks at the transition to the hoses. If the connection is not tight, disconnect the device from the mains straight away and immediately contact our service department.

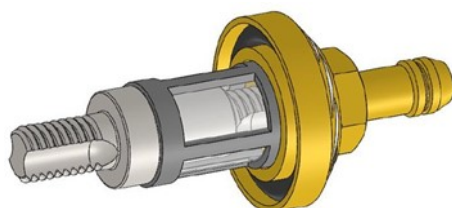


—> Note the internal lugs.

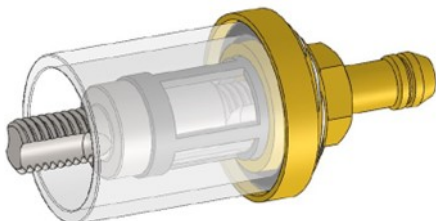
—> Push the filter sieve onto the mandrel



—> Filter sieve pushed on



—> Screw the connecting piece onto the mandrel by hand



—> Insert filter glass

—> Unscrew the connection piece and pull tight by hand

Insert filter:

The **white filter insert must point to the right towards the pump**. To install, push the hose ends back onto the connectors on both sides of the filter. Make sure that the hose ends are pushed completely onto the connection pieces.

IMPORTANT: If the filter is not screwed on properly, it will draw in air, which will lead to extreme foaming during the next cleaning process!

8. Troubleshooting

8.1. Safety



BEFORE any troubleshooting, carefully read **Section 2 (Safety)** and **Section 3 (Intended use and safety)** again and **ALWAYS** follow the instructions set out therein!



Please always observe the safety instructions set out in this manual!

8.2. Service address

KNOSTI Phono-Zubehör-Vertriebs GmbH

Gewerbering 4, D - 86666 Burgheim

Tel.: +49 8432 94870

Fax: +49 8432 948730

info@knosti.de — www.knosti.de — www.cleaning-records.com

8.3. Initial measures for rectifying faults

You can rectify simple faults yourself using the following description of possible errors and corresponding advice. Errors can also occur due to incorrect operation.

Error description	Possible cause(s)	Solution
The device cannot be switched on	No power supply	Plug power adapter in Check the fuse of the socket Is the plug correctly plugged in the device? Start button faulty?
Pump is not starting	Device is not in STOP mode	Wait until the device is in STOP mode
The device cannot be drained	Drain/Filter is blocked	Clean drain / filter
Liquid inside the device	Cleaning fluid has overflowed during refilling	Follow the safety instructions! Carefully dry out the cleaning fluid
Device is dirty on the outside	Carelessness during handling	Wipe the device carefully with a damp cloth, do NOT use cleaning agents!

8.4. Modifications / changes



See also Section 8.2 Service address.

Please read Section 1.6 Legal Notices on this!



Changes, modifications, repairs or replacement of faulty parts, with the exception of the brushes and filter, may only be carried out by the manufacturer or a service partner authorised by the manufacturer!



Unauthorised modifications and alterations are strictly prohibited! All modifications undertaken on the mechanics or electronics as well as other changes invalidate the warranty / guarantee!

9. Disposal



Comply with the current guidelines for handling electrical waste, which are described in the Electrical and Electronic Equipment Act in Germany and in the EU via the WEEE guidelines.

ONLY dispose of items at the recycling centre! Electrical waste should **NOT** be put in the dustbin! Therefore, **DO NOT** throw away the device in household waste.

WEEE-Reg.-no.: DE 37786185

10. Warranty

The respective statutory warranty conditions shall apply.

11. Available accessories

The following accessories are currently available from **specialist dealers** or at **www.knosti.de**:

- **1302011**
Disco-Antistat Zubehörset Ultrasonic, includes 2 cleaning brushes, 1 filter and 1 sponge brush
- **1302010**
Disco-Antistat Ultrasonic Label Cover
- **1302000**
Disco-Antistat Ultraclean 200ml, concentrate for record cleaning
- **1302001**
Disco-Antistat BiDest 1 litre, ultrapure water
- **1301000**
Disco-Antistat Mixture 1 litre, antistatic cleaning agent for records
- **1302499**
Disco-Antistat Drying Rack