

7.5 Maintenance Filter aluminium/glass



No tools are usually required for the maintenance of the filter.

It is necessary to check the built-in filter for its degree of soiling and to clean it at regular intervals. The filter is available from the **KNOSTI** spare parts service.

- Open the service flap as described under **7.2.1**.
- Carefully remove the two hose ends at the inlet and outlet of the filter. The filter can now be re-moved from the housing.
- **Disassembling the filter & reassembling the filter;** To do this, hold the filter by the two gold-coloured ends and unscrew the filter counterclockwise.
- **Cleaning the filter;** wash the filter under running water and then dry the individual parts carefully

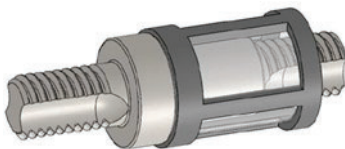


Always make sure that the filter is correctly fitted and the hose ends are firmly seated on the connection pieces of the filter. Then check the filter for leaks at the transition to the hoses. If the connection is not tight, disconnect the device from the mains straight away and immediately contact our service department.

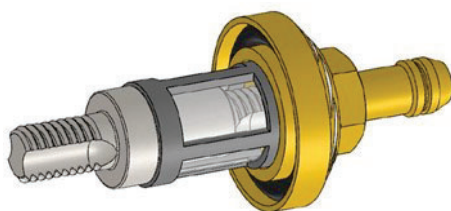


—> Note the internal lugs.

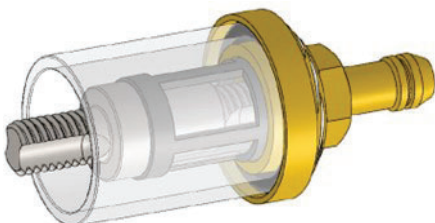
—> Push the filter sieve onto the mandrel



—> Filter sieve pushed on



—> Screw the connecting piece onto the mandrel by hand



—> Insert filter glass

—> Unscrew the connection piece and pull tight by hand

Insert filter:

The **white filter insert must point to the right towards the pump**. To install, push the hose ends back onto the connectors on both sides of the filter. Make sure that the hose ends are pushed completely onto the connection pieces.

IMPORTANT: If the filter is not screwed on properly, it will draw in air, which will lead to extreme foaming during the next cleaning process!